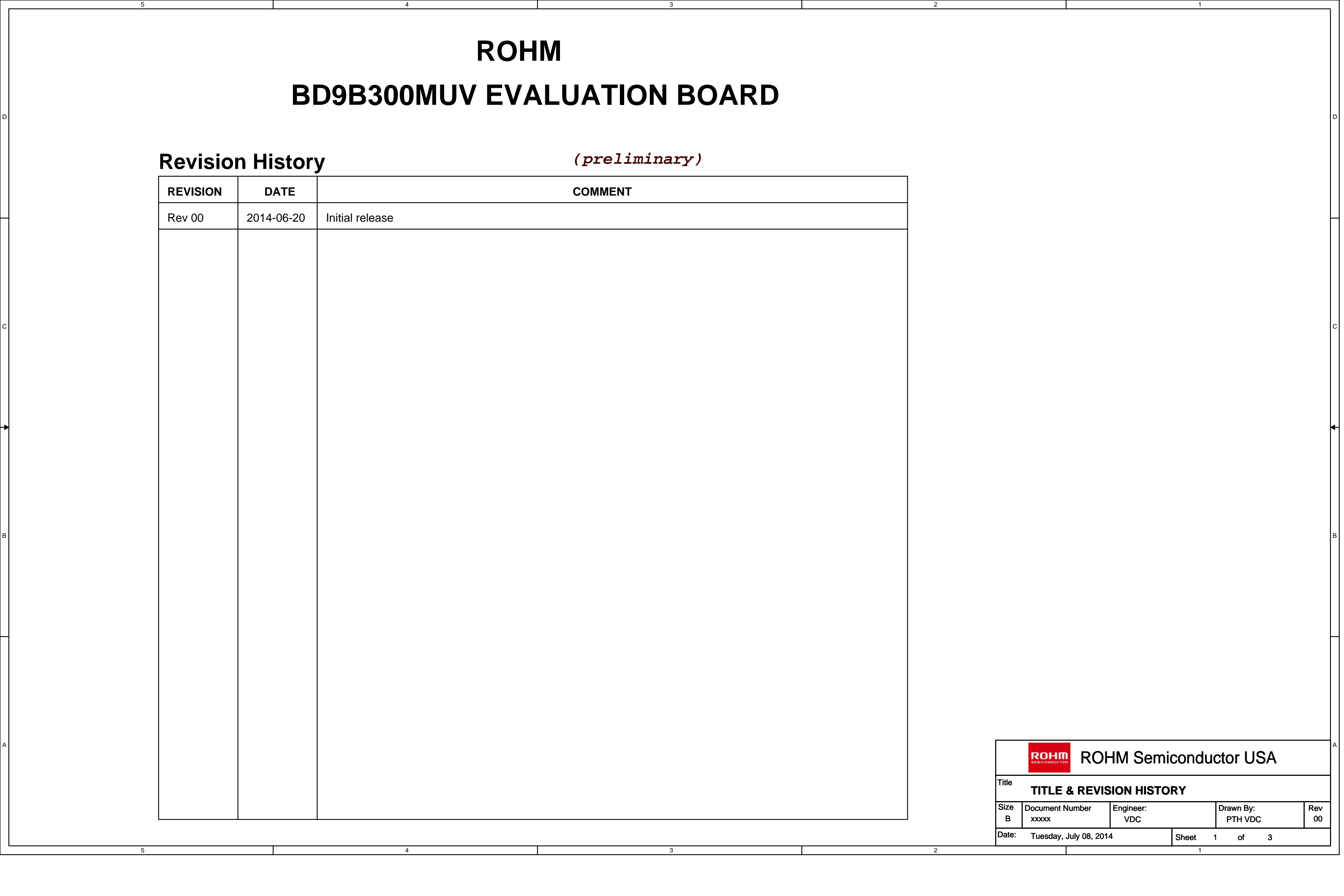

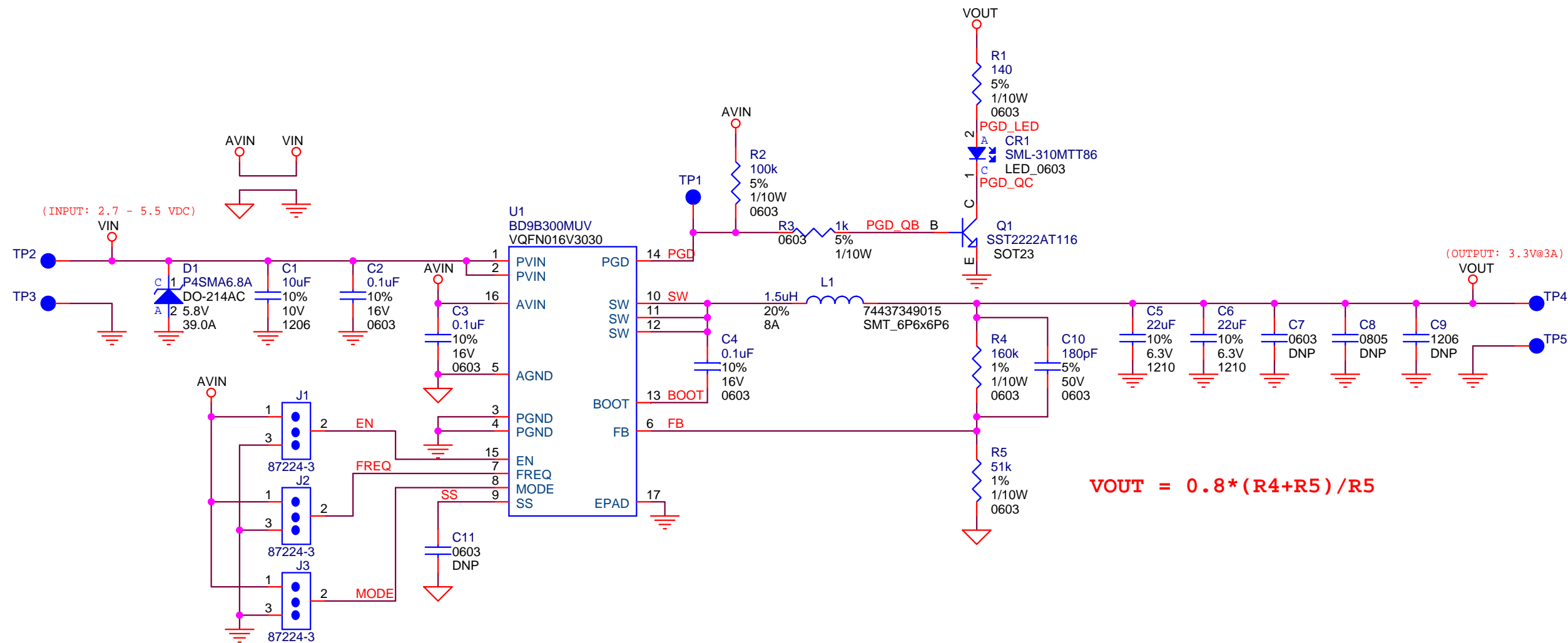


[illegible][illegible][illegible][illegible][illegible][illegible][illegible][illegible]

PAGE	PAGE CONTENT
01	TITLE & REV. HISTORY
02	PAGE INDEX
03	BD9B300MUV-E2EVK-101

<div><div> ROHM Semiconductor USA</div></div>				
Title PAGE INDEX				
Size B	Document Number xxxxx	Engineer: VDC	Drawn By: PTH VDC	Rev 00
Date: Tuesday, July 08, 2014			Sheet 2 of 3	



BD9B300MUV EVM Jumper Positions		
Reference Designator	Position	Description
J1	2 - 1	Enable U1
	2 - 3	Disable U1
J2	2 - 1	Set switching frequency of U1 is 1.0MHz
	2 - 3	Set switching frequency of U1 is 2.0MHz
J3	2 - 1	Set operation mode of U1 is fixed frequency PWM mode
	2 - 3	Set operation mode of U1 is automatically switched between the Deep-SLLM control and fixed frequency PWM mode

Note:
1. 0.8V =< VOUT =< 0.8*VIN